

The Same Love - Paul Baloche

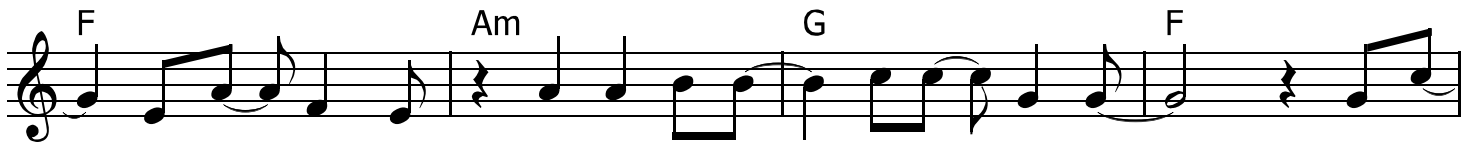
Words & Music : Paul Baloche, Michael Rossback

♩=102

Verse 1&2



1. You choose the hum - ble and raise them high You choose the weak
2. You take the faith - less one a - side And speak the words

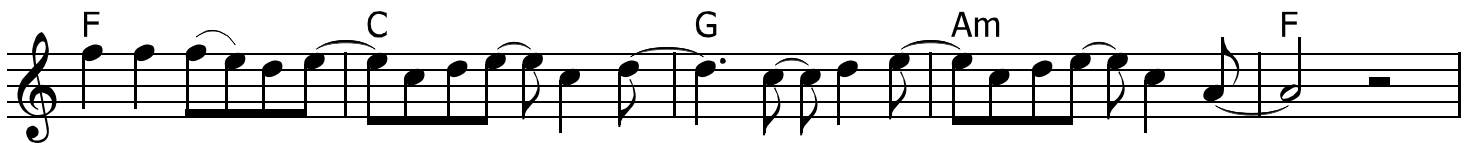


and make them strong You heal our brok - en-ness in - side And give
"you are mine" You call the cy - nic and the proud "Come to

Chorus



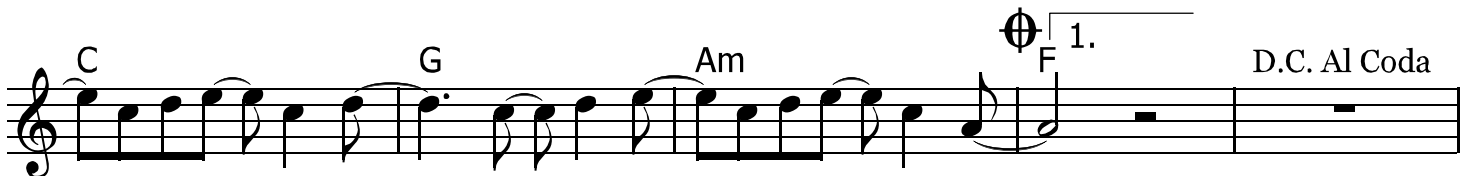
us life The same love that set the cap-tives free The same love that o-pened
me now"



eyes to see Is call -ing us all by name You are call -ing us all by name



The same God that spread the hea-vens wide The same God that was cru - ci - fied Is call



-ing us all by name You are call -ing us all by name



O - o - oh o - oh o - o - oh o - oh O - o - oh

G Am F G Am F Bridge C 2

o - oh o - o - oh o - oh You're call - ing,

Detailed description: This is the first line of a musical score. It features a treble clef and a key signature of one sharp (F#). The melody consists of quarter and eighth notes. Chords G, Am, and F are indicated above the staff. The lyrics 'o - oh o - o - oh o - oh' are written below the notes. A double bar line is followed by a section labeled 'Bridge' with a C chord above it. The number '2' is in the top right corner.

G Am F C

You're call - ing You're call - ing us to the cross You're call - ing,

Detailed description: This is the second line of the musical score. It continues the melody from the first line. Chords G, Am, F, and C are indicated above the staff. The lyrics are 'You're call - ing You're call - ing us to the cross You're call - ing,'.

G Am F Fine C

You're call - ing You're call - ing us to the cross You're call - ing,

Detailed description: This is the third line of the musical score. It continues the melody. Chords G, Am, F, and C are indicated above the staff. The word 'Fine' is written above the final note of the line. The lyrics are 'You're call - ing You're call - ing us to the cross You're call - ing,'.

G Am F C

You're call - ing You're call - ing us to the cross You're call - ing,

Detailed description: This is the fourth line of the musical score. It continues the melody. Chords G, Am, F, and C are indicated above the staff. The lyrics are 'You're call - ing You're call - ing us to the cross You're call - ing,'.

G Am F 2. F D.S. Al Fine

You're call - ing You're call - ing us to the cross O - o - oh

Detailed description: This is the fifth and final line of the musical score. It continues the melody. Chords G, Am, F, and F are indicated above the staff. A first ending bracket is shown above the final measure, with a '2.' above it. The lyrics are 'You're call - ing You're call - ing us to the cross O - o - oh'. The instruction 'D.S. Al Fine' is written above the final measure.