

# Where I Belong - Building 429

Words & Music : Jason Ingram, Jason Roy

♩=90

Verse 1  
Am



Some-times it feels like I'm watch - ing from the out - side Some-times it feels like I'm breath



- ing but am I a-live I will keep search-ing for ans - wers that aren't here to find

Chorus



All I know is I'm not home yet This is not where I



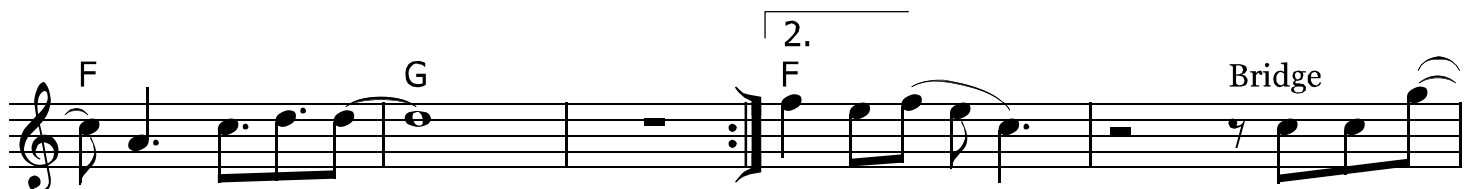
be-long Take this world and give me Je - sus This is not where I



be-long So when the walls come fall - ing down on me



And when I'm lost in the cur - rent of a rag - ing sea I have this bless-ed ass - ur



-ance hold-ing me be-long When the earth

B $\flat$  F C G 2

shakes I wan-na be found in You When the lights

B $\flat$  F C G

fade I wan-na be found in You

3. F 4. F C Ending G Am

be-long be-long Where I be-long

F C G

Where I be - long Where I be - long

Am F C

Where I be - long