

# Steady My Heart - Kari Jobe

Songwriter : Kari Jobe, Ben Glover, Matt Bronleewe

♩=94

Verse 1&2



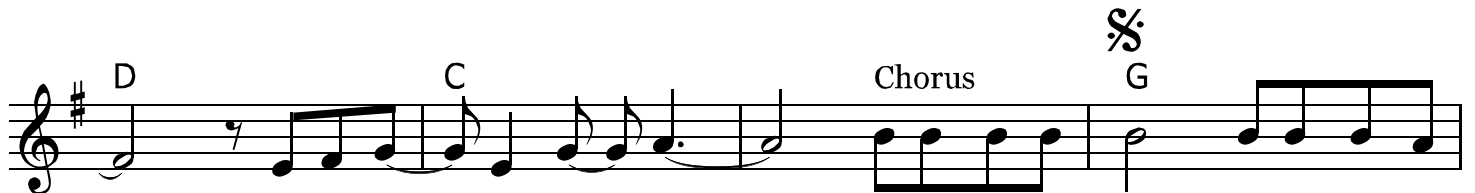
1. Wish it could be ea - sy, why is life so mes - sy Why is pain a part of us  
2. I'm not gon - na wor - ry, I know that You got me Right in - side the palm of Your hand



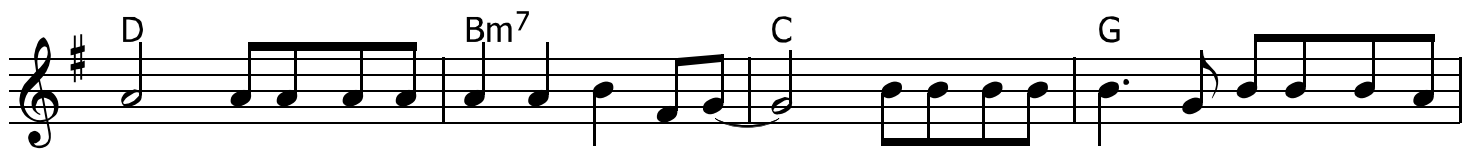
There are days I feel like no - thing e - ver goes right  
Each and e - v'ry mo - ment, what's good and what gets brok - en



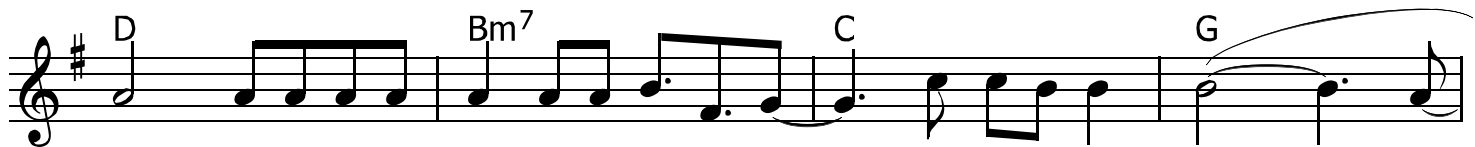
Some - times it just hurts so much But You're here, You're real  
Hap - pens just the way You plan You are here, You're real



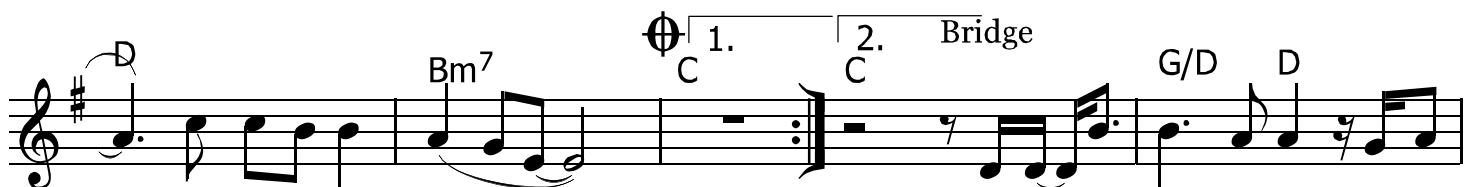
I know I can trust You E - ven when it hurts, e - ven when it's  
I know I can trust You



hard E - ven when it all just falls a - part I will run to You cause I know that You



are Lov - er of my soul, heal - er of my scars You stea - dy my heart,



You stea - dy my heart And I will run to You I'll find

Bm7 C G/D D Bm7 C <sup>2</sup>

re-fuge in Your arms And I will sing to You Cause of e-v'ry-thing You are

C G Bm7 C

You stea-dy my heart You stea-dy my heart

D D.S. Al Coda C Ending G

E - ven when it I'm not gon - na wor - ry,

C

I know that You got me Right in - side the palm of Your hand