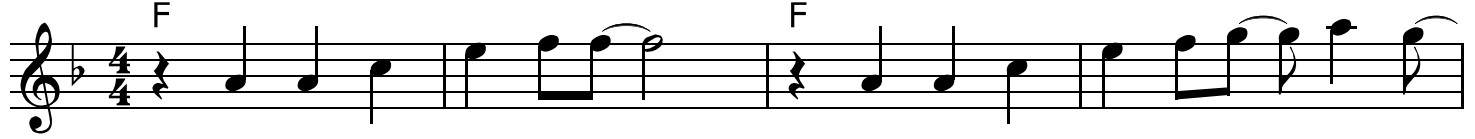


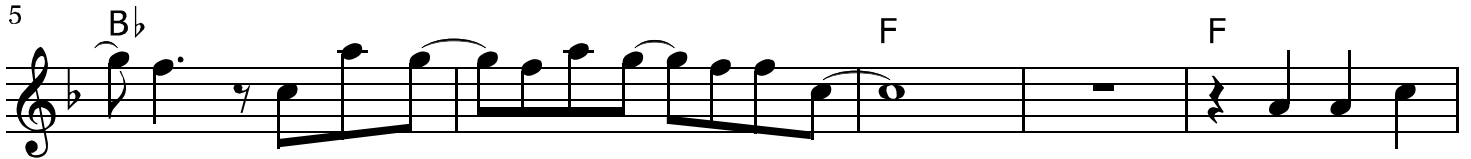
My Kind of Christmas - Shuree

♩=144

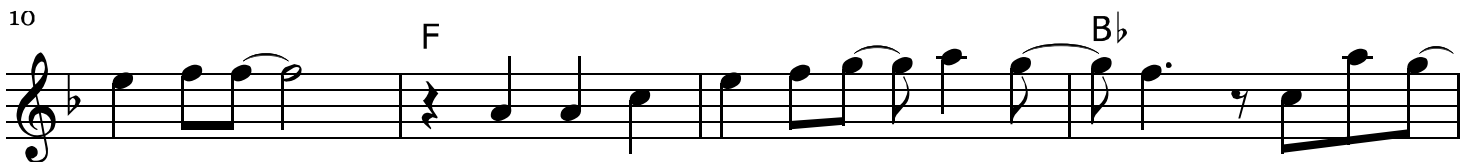
Verse 1



Feel so much joy to-day I love the ho - li-days It's Christ



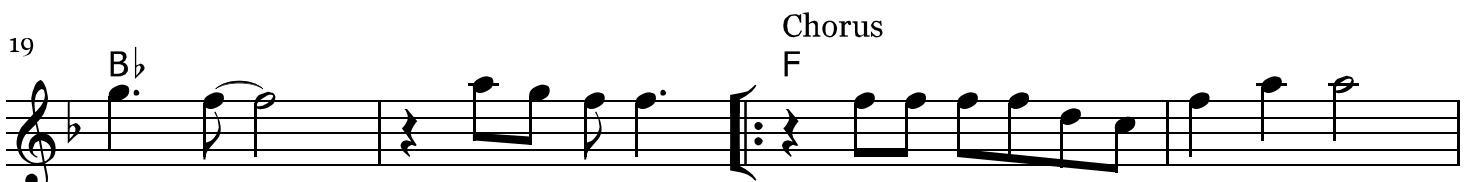
-mas The most won - der-ful time of the year E - v'ry-one's



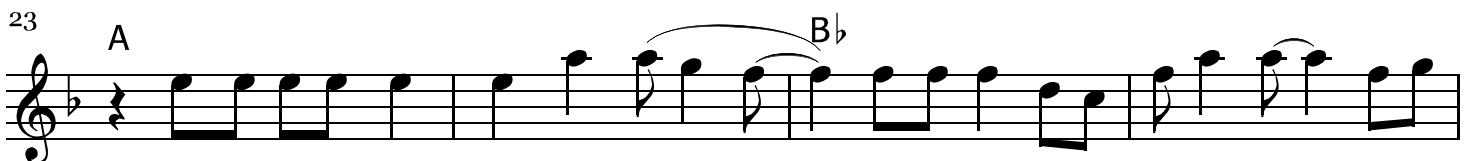
mer - ri - ly mak - ing their me - mo - ries It's Christ - mas and we're try -



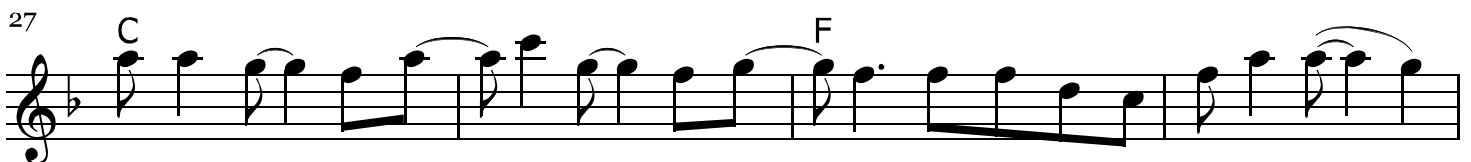
- ing to spread the cheer Oh-oh-oh - oh E - v'ry-thing is




ma - gic Can you feel it E - v'ry-bo - dy sing - ing si - lent night



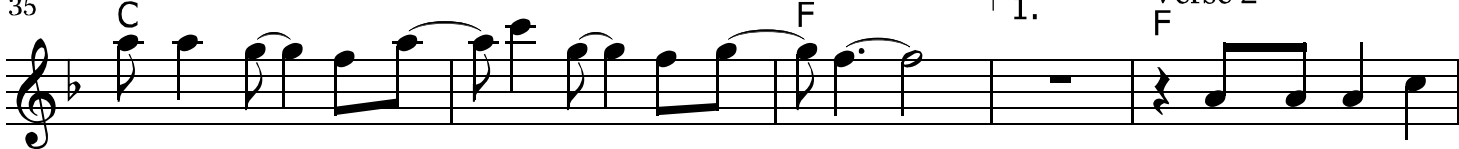
Sleep - ing un - der those Christ - mas lights Star - ing out at the star - ry skies Spi - rit



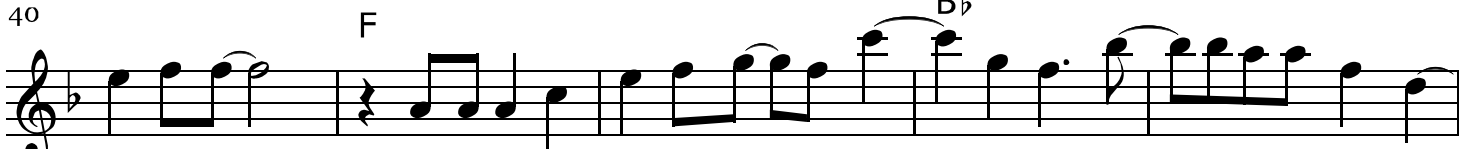
burn - ing bright Oh that's my kind of Christ - mas Count - ing down the snow - y days

31 **A** 2
Musical staff for line 31, starting with a treble clef and a key signature of one flat. It contains a melodic line with eighth and quarter notes, including a triplet of eighth notes. A **Bb** chord symbol is placed above the staff.


With our pock-ets full of can-dy canes Lord, I want the world to feel that way Spi-rit

35 **C** **F** 1. Verse 2
Musical staff for line 35, continuing the melody. It includes a first ending bracket labeled "1." and a **F** chord symbol.

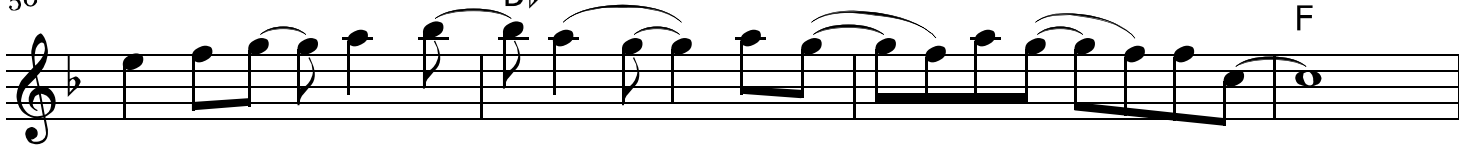
burn-ing bright Oh that's my kind of Christ -mas Wrapped in blank-ets

40 **F** **Bb**
Musical staff for line 40, featuring a **F** chord symbol and a **Bb** chord symbol.

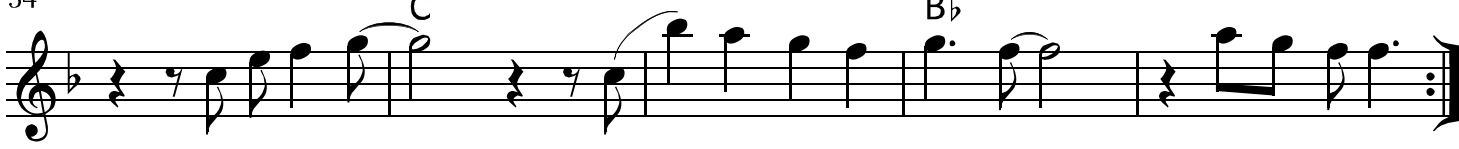
by the fire List-en to the gos-pel choir sing-ing glo-ry Glo - ry to the new-born

45 **F** **F** **F**
Musical staff for line 45, containing three **F** chord symbols.

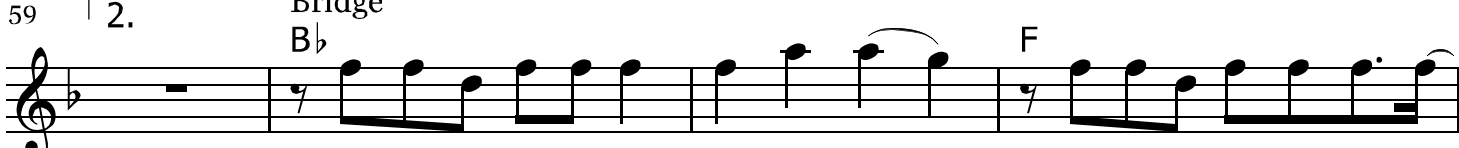
king There's some-thing in the air Fam-ily's com-ing

50 **Bb** **F**
Musical staff for line 50, featuring a **Bb** chord symbol and an **F** chord symbol.

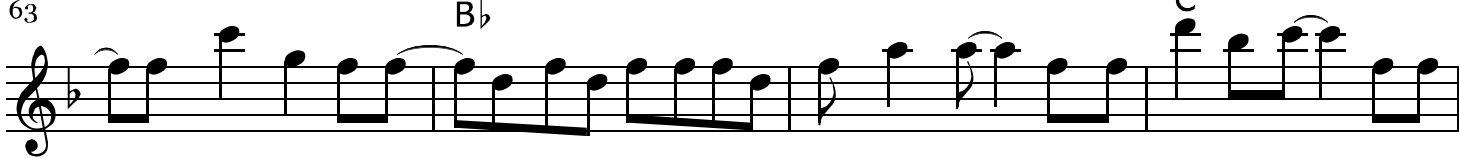
home to share This Christ -mas No place we'd ra - ther be

54 **C** **Bb**
Musical staff for line 54, including a **C** chord symbol and a **Bb** chord symbol.

Oh-oh-oh - oh E - v'ry-thing is ma - gic Can you feel it

59 2. **Bridge** **Bb** **F**
Musical staff for line 59, starting with a second ending bracket labeled "2." and containing **Bb** and **F** chord symbols.

The bells are ring-ing at mid-night clear My soul is danc-ing, danc-ing,

63 **Bb** **C**
Musical staff for line 63, featuring a **Bb** chord symbol and a **C** chord symbol.

cause He's final-ly here I'm like a hap-py wide-eyed child Take me back in time, let the

67

3. Ending

A

B \flat

3

clock re-wind

Oh-oh-oh - oh

That's my kind of Christ -mas

72

C

F

Oh-oh-oh - oh

- oh - oh - oh

That's my kind of Christ -mas