

I Refuse - Josh Wilson

Words & Music : Josh Wilson, Ben Glover

♩=127

Verse 1

D

F#

Some -times I, I just want to close my eyes And act like e-v'ry-

G

D

-one's al - right When I know they're not This

D

F#

world needs God But it's ea-si-er to stand and watch I could say a prayer and

G

D

Bm A

just move on Like no -thing's wrong But I re-fuse

G

Chorus

D

A

'Cause I don't want to live like I don't care I don't want to say an- o-ther

G

D

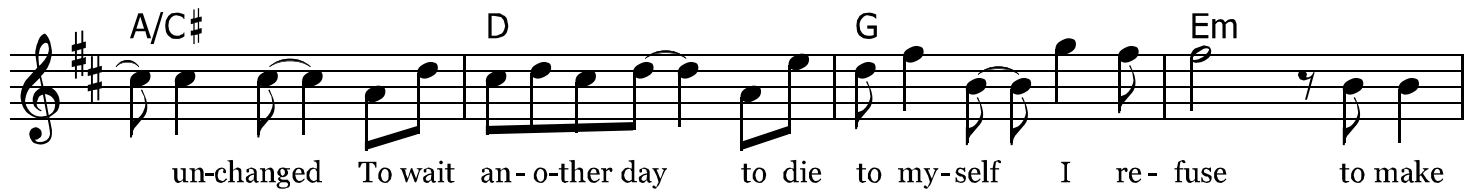
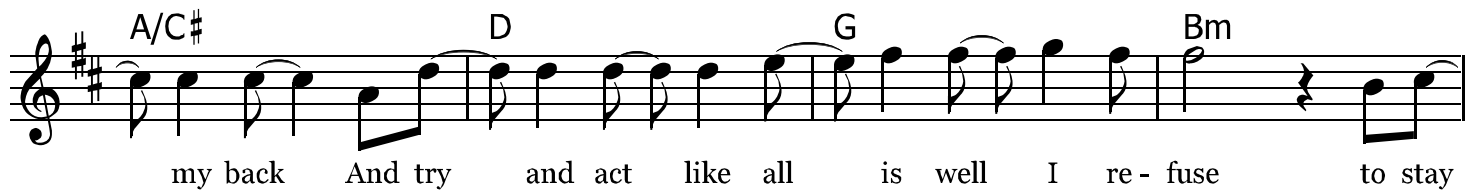
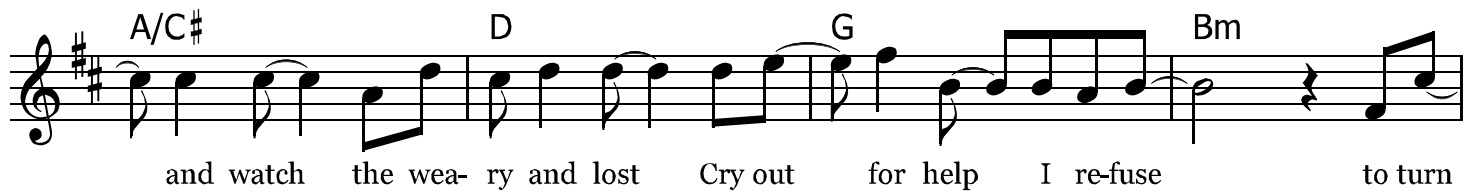
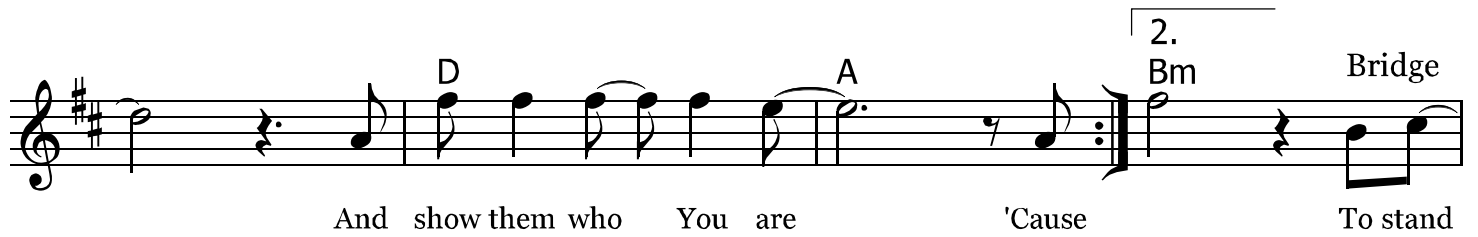
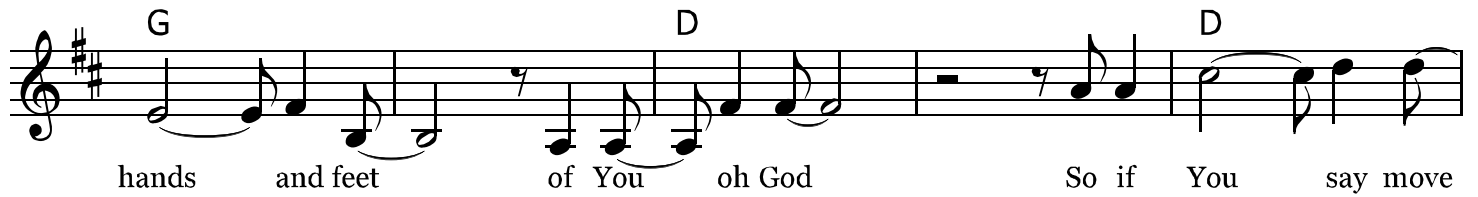
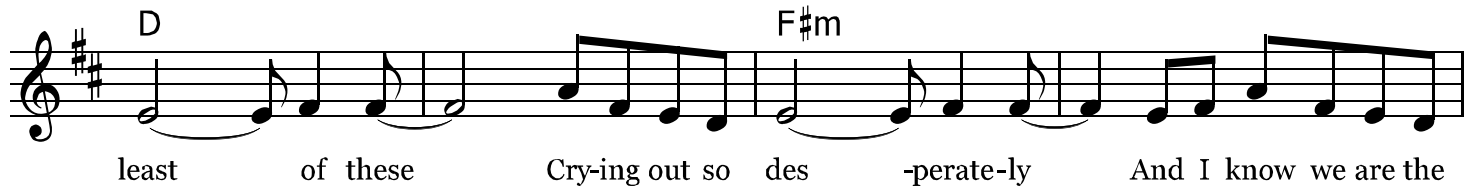
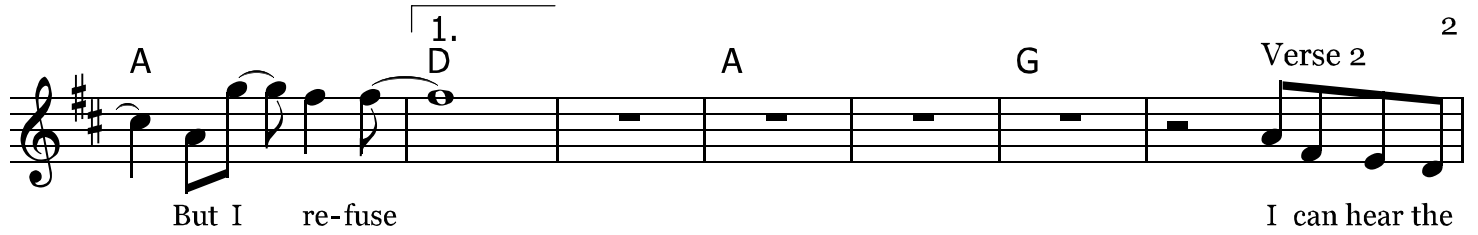
emp-ty prayer Oh, I re - fuse to Sit a-round and wait for some -one else To

A

G

Em

do what God has called me to do my-self Oh, I could choose not to move



3.
D

Ending 3

A

one more ex - cuse 'Cause I re-fuse

A G D

I re - fuse

Detailed description: The image shows a musical score for a song in D major (two sharps) and 4/4 time. The first staff contains the first line of music, starting with a treble clef and a key signature of two sharps. The melody consists of eighth and quarter notes. The lyrics 'one more ex - cuse 'Cause I re-fuse' are written below the first staff. The word 'Ending' is written above the second staff, and the number '3' is written above the first staff. The second staff contains the second line of music, starting with a treble clef and a key signature of two sharps. The melody continues with eighth and quarter notes. The lyrics 'I re - fuse' are written below the second staff. The word 'Ending' is written above the second staff, and the number '3' is written above the first staff. The score ends with a double bar line.